



2008 **Tonawanda Reservation Historical Calendar**



A project of the Tonawanda Reservation Historical Society

Mission Statement

The Tonawanda Reservation Historical Society was established for the purpose of preserving and disseminating the history of the Tonawanda Seneca Indian Reservation for our people, for the generations yet unborn, and for the education of non-Indians about our culture. To achieve this purpose the Historical Club's goals are to collect and preserve materials pertaining to the history of the Tonawanda Reservation and its people; to record and document historically valuable information; make such materials available to researchers, the public and especially to Tonawanda Reservation residents and their descendants; sponsor exhibits, publications, and other methods to inform and educate people about the history of the Tonawanda Reservation.

The Tonawanda Reservation Historical Society
P.O. Box 516, Basom, NY 14013



L-R: Hiram Moses, Hattie Blackchief, Delbert Moses, ca. 1930's

On The Cover; Tribal Office Building, 1999

JANUARY 2008

Nisgowakneh

SUNDAY
Awëdadogëhdöh

MONDAY
O'wëdë:dat

TUESDAY
Swëda:dih

WEDNESDAY
Ha'dewëdaëh

THURSDAY
Ëyohë'tgeh

FRIDAY
Wë:da:k'ah

SATURDAY
Wë:da:k

		1	2	3	4	5
		1 New Year's Day	2	3	4	5
6	7	8 ●	9	10	11	12
13	14	15 ☾	16	17	18	19
20	21	22 ○	23	24	25	26
	Martin Luther King Jr. Day					
27	28	29	30 ☾	31		



Old Iron Bridge, Meadville Rd., ca. 1940

FEBRUARY 2008 Niyo'not'a:h

SUNDAY
Awëdadogëhdöh

MONDAY
O'wëdë:dat

TUESDAY
Swëda:dih

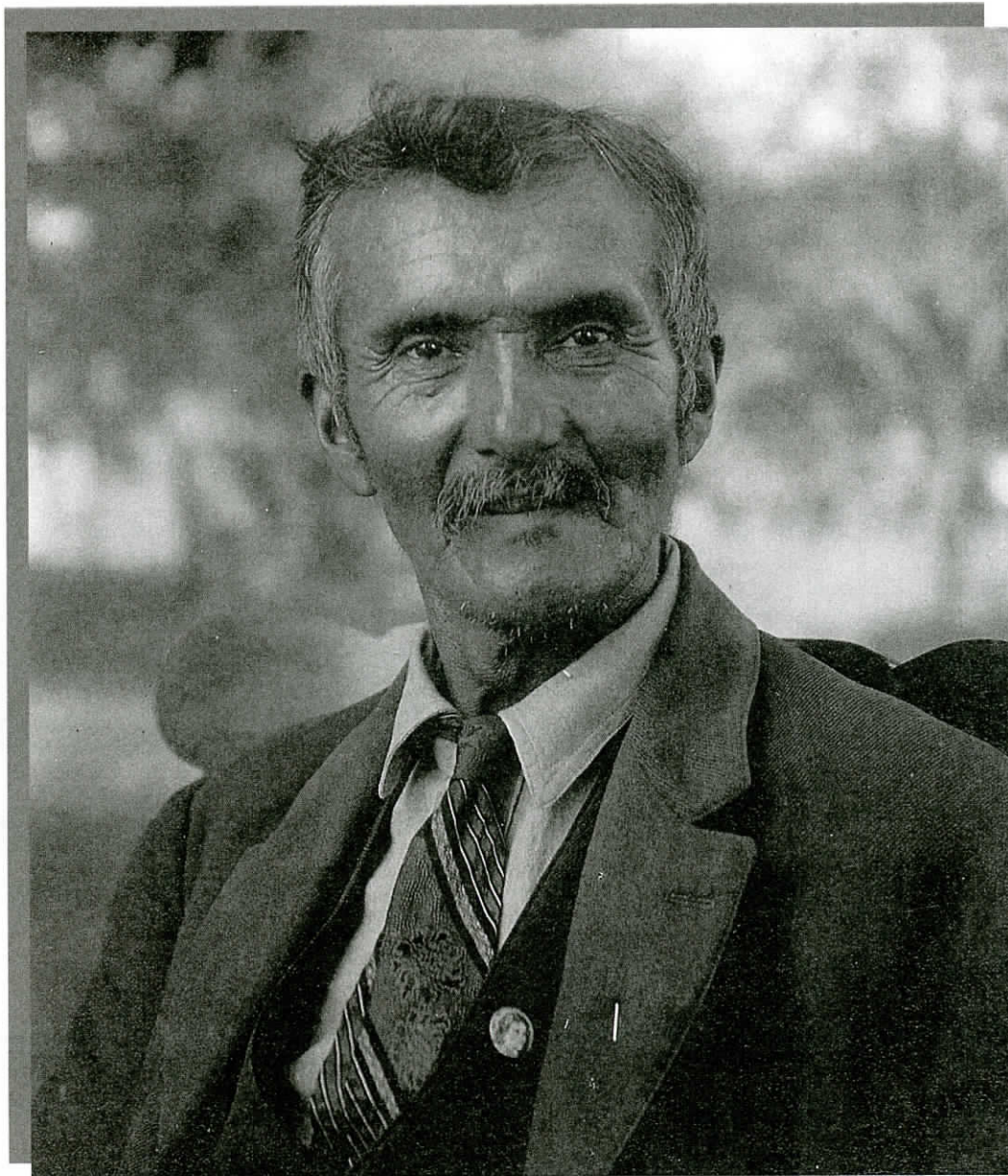
WEDNESDAY
Ha'dewëdaëh

THURSDAY
Ëyohë'tgeh

FRIDAY
Wë:da:k'ah

SATURDAY
Wë:da:k

					1	2 Groundhog Day
3	4	5	6 Ash Wednesday	7 ●	8	9
10	11	12	13	14 ☾ Valentine's Day	15	16
17	18 President's Day	19	20	21 ○	22	23
24	25	26	27	28	29 ☾	



Rev. Peter Doctor, ca. 1930's

MARCH 2008

O'not'ah

SUNDAY
Awëdadogëhdöh

MONDAY
O'wëdë:dat

TUESDAY
Swëda:dih

WEDNESDAY
Ha'dewëdaëh

THURSDAY
Ëyohë'tgeh

FRIDAY
Wë:da:kah

SATURDAY
Wë:dak

						1
2	3	4	5	6	7 ●	8
9	10	11	12	13	14 ☾	15
16	17	18	19	20	21 ○	22
Palm Sunday	St. Patrick's Day			First Day of Spring	Good Friday	
23	24	25	26	27	28	29 ☾
Easter Sunday 30	31					



Tonawanda Indian Presbyterian Church, ca. 1910

APRIL 2008

Ganö'gat

SUNDAY
Awëdadogëhdöh

MONDAY
Owëdë:dat

TUESDAY
Swëda:dih

WEDNESDAY
Ha'dewëdaëh

THURSDAY
Ëyohë'tgeh

FRIDAY
Wë:da:kah

SATURDAY
Wë:da:k

		1	2	3	4	5
		1 <i>April Fools' Day</i>	2	3	4	5
6 ● <i>Daylight Savings Time Begins</i>	7	8	9	10	11	12 ☾
13	14	15	16	17	18	19
20 ○	21	22	23 <i>Administrative Professionals Day</i>	24	25	26
27	28 ☾	29	30			



Tonawanda Reservation Legion color guard, ca. 1945

MAY 2008

Yaikneh

SUNDAY
Awëdadogëhdöh

MONDAY
Owëdë:dat

TUESDAY
Swëda:dih

WEDNESDAY
Ha'dewëdaëh

THURSDAY
Ëyohë'tgeh

FRIDAY
Wë:da:k'ah

SATURDAY
Wë:da:k

				1	2	3
4	5 ●	6	7	8	9	10
11	12 ☾	13	14	15	16	17
18	19	20 ○	21	22	23	24
25	26	27	28 ☾	29	30	31

Mother's Day

Memorial Day



Tonawanda Indian Baptist Church, ca. 1900

JUNE 2008

Hayë:niah

SUNDAY
Awëdadogëhdöh

MONDAY
Owëdë:dat

TUESDAY
Swëda:dih

WEDNESDAY
Ha'dewëdaëh

THURSDAY
Ëyohë'tgeh

FRIDAY
Wë:da:kah

SATURDAY
Wë:da:k

1	2	3 ●	4	5	6	7
8	9	10 ☾	11	12	13	14 Flag Day
15 Father's Day	16	17	18 ○	19	20	21 First Day of Summer
22	23	24	25	26 ☾	27	28
29	30					



Lacrosse team, ca. 1960's

JULY 2008

Saisgekneh

SUNDAY
Awëdadogëhdöh

MONDAY
Owëdë:dat

TUESDAY
Swëda:dih

WEDNESDAY
Ha'dewëdaäh

THURSDAY
Ëyohë'tgeh

FRIDAY
Wë:da:k'ah

SATURDAY
Wë:da:k

		1	2	3 ●	4 Independence Day	5
6	7	8	9	10 ☾	11	12
13	14	15	16	17	18 ○	19
20	21	22	23	24	25 ☾	26
27	28	29	30	31		



Log cabin, Meadville Road, ca. 1960

AUGUST 2008

Gedē'ökneh

SUNDAY
Awädadogēhdöh

MONDAY
O'wädē:dat

TUESDAY
Swēda:dih

WEDNESDAY
Ha'dewēdaäh

THURSDAY
Ëyohē'tgeh

FRIDAY
Wē:da:kah

SATURDAY
Wē:da:k

					1 ●	2
3	4	5	6	7	8 ☾	9
10	11	12	13	14	15	16 ○
17	18	19	20	21	22	23 ☾
24 31	25	26	27	28	29	30 ●



Softball team, ca. 1935

Front Row, L-R: Evelyn Steeprock, Violet Reuben, unknown, Kathryn Diluzio, Ruth Printup, Charlotte Jones, Molly Casseri; Row 2, Ella Shanks, Mary Poodry, Joe Poodry, Sr., unknown, Eunice George, Ruth Black.

SEPTEMBER 2008 *Gë:ökneh*

SUNDAY
Awëdadogëhdöh

MONDAY
O'wëdë:dat

TUESDAY
Swëda:dih

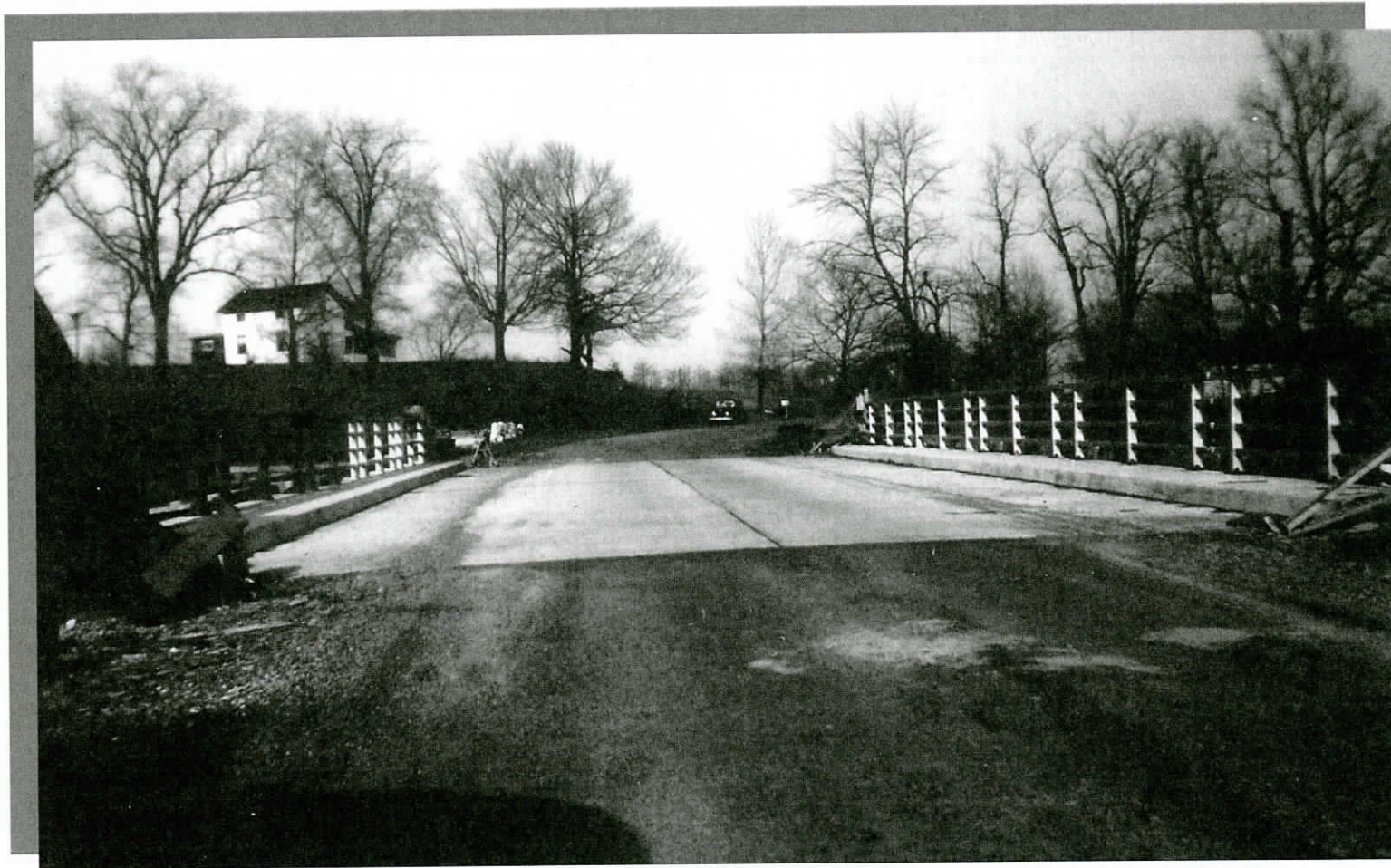
WEDNESDAY
Ha'dewëdaëh

THURSDAY
Ëyohë'tgeh

FRIDAY
Wë:da:k'ah

SATURDAY
Wë:da:k

	1	2	3	4	5	6
	1 Labor Day	2	3	4	5	6
7 Grandparent's Day	8	9	10	11	12	13
14	15 ○	16	17	18	19	20
21	22 ☾ First Day of Autumn	23	24	25	26	27
28	29 ●	30				



Tonawanda Creek Bridge, Bloomingdale Road, ca. 1949

OCTOBER 2008 *Gahsa'kneh*

SUNDAY
Awëdadogëhdöh

MONDAY
Owëdë:dat

TUESDAY
Swëda:dih

WEDNESDAY
Ha'dewëdaëh

THURSDAY
Ëyohë'tgeh

FRIDAY
Wë:da:kah

SATURDAY
Wë:da:k

			1	2	3	4
5	6	7 ☾	8	9	10	11
12 <small>Columbus Day</small>	13	14 ○	15	16	17	18
19	20	21 ☾	22	23	24	25
26 <small>Daylight Saving's Time Ends</small>	27	28 ●	29	30	31 <small>Halloween</small>	



Log cabin, Tonawanda Reservation

NOVEMBER 2008

Jodto:h

SUNDAY
Awëdadogëhdöh

MONDAY
Owëdë:dat

TUESDAY
Swëda:dih

WEDNESDAY
Ha'dewëdaëh

THURSDAY
Ëyohë'tgeh

FRIDAY
Wë:da:k'ah

SATURDAY
Wë:da:k

						1
2	3	4 Election Day	5	6 ☾	7	8
9	10	11 Veteran's Day	12	13 ○	14	15
16	17	18	19 ☾	20	21	22
23 30	24	25	26	27 ●	28	29
				Thanksgiving Day		



Tonawanda Indian Band, Russell Park, Akron, NY, 1922

DECEMBER 2008

Nis'ah

SUNDAY
Awëdadogëhdöh

MONDAY
O'wëdë:dat

TUESDAY
Swëda:dih

WEDNESDAY
Ha'dewëdaëh

THURSDAY
Ëyohë'tgeh

FRIDAY
Wë:da:k'ah

SATURDAY
Wë:da:k

	1	2	3	4	5 ☾	6
7 <small>Pearl Harbor Day</small>	8	9	10	11	12 ○	13
14	15	16	17	18	19 ☾	20
21 <small>First Day of Winter</small>	22	23	24	25 <small>Christmas Day</small>	26	27 ●
28	29	30	31 <small>New Year's Eve</small>			